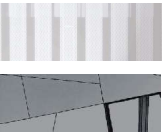


How to Specify:

SOLIDAL® Building & Structural Envelopes



STEP 1: Material

Nominate your preferred SOLIDAL® Thickness:

SOLIDAL®T2® (2mm) NATA Certified AS1530.1/ AS1530.3

SOLIDAL®T3® (3mm) NATA Certified AS1530.1/ AS1530.3

SOLIDAL®T4® (4mm) NATA Certified AS1530.1/ AS1530.3

Please Note: Metal formed first, coated second.

STEP 2: Application System

Nominate your preferred Application System

SOLIDAL® CMC (Custom Made Cassette) System

SOLIDAL® Rainscreen System

SOLIDAL® Curtain Wall

SOLIDAL® Profile Cladding

SOLIDAL® Face Fix & Flat Stick System

Please Note: Metal formed first, coated second.

STEP 3: Finish and Colour

Nominate your preferred finish:

Refer website: solidal.com/en/finishes

STEP 4: Creative® (optional)

SOLIDAL® Creative:

SOLIDAL® Perforated

SOLIDAL® Ribbed Route

SOLIDAL® Ribbed Fold

SOLIDAL® Dimple

SOLIDAL® Lighting

Please Note: Metal formed first, coated second.

Specification EXAMPLE:

Company: Watermark International® Pty Ltd
Contact: Technical Manager
Phone: 04 99709076 or 1300 252 325
Email: info@solidal.com

STEP 1: Material SOLIDAL®T4® (4mm)
STEP 2: Application System SOLIDAL® CMC (Custom Made Cassette) System
STEP 3: Finish Wet Spray PVDF, NU051 Pearl Black

SOLIDAL®